



AC-DC Conduction cooled PST21 150, 300, 600, 1200W

PST21, very compact AC-DC converter in conduction cooled format, incorporates input filtering, input and output protections, very robust mechanical package and connection required in most of the severe environment for industrial, defense type of applications. The PSU provides high reliability thanks to the integration of Vicor Corp. modules, high efficiency, input-to-output isolation, active very low inrush circuit, overtemperature protection, input over/undervoltage lockout. The PSU wide range input is protected against surges and transients and EMI filtered. The outputs are continuously short-circuit proof. Fanless, this solution is suitable for high reliability applications.

The PSU is configurable with 1 to 6 outputs according to models in many output voltages from 3,3V to 48Vdc, other outputs are even possible as semi-standard versions.

General features

- Input : 85-265Vac
- Active PFC EN61000-3-2
- E.M.I. : EN55022, MIL-STD461E CE102 (M option)
- Output from 3,3V to 48Vdc
- Operating temperature -20°C +100°C baseplate
- Parallel or series operations up to several kW

Signals

- Remote ON/OFF isolated
- Output LED
- Output voltage adjustment
- PowerGood
- Remote senses (A & B versions only)
- Paralleling with current share

Options

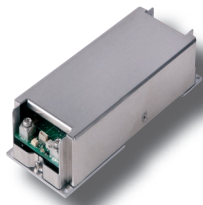
- -H : Addition of a 15mm heatsink (H1 for transversal fins)
- -M : MIL-STD810, 704, MIL-STD 461 CE102
- -T : Components are changed to comply with -40°C operation
- -V : Components & PCB are covered with an acrylic coating
- -IP : Integration into IP65 enclosure

Benefits

- Active very low inrush current limitation
- Very low profile 35 or 40mm
- High temperature operation 100°C baseplate
- Many signal available

Full datasheet on www.powersystemtechnology.com

PST21D
AC-DC, 150W, 1 output
165 x 61 x 35mm
Micro



PST21C
AC-DC, 300W, 1-2 outputs
200 x 80 x 40mm
Micro, Mini



PST21B
AC-DC, 600W, 1-3 outputs
200 x 127 x 40mm
Micro, Mini, Maxi



PST21A
AC-DC, 1200W,
1-6 outputs
255 x 127 x 40mm
Micro, Mini, Maxi



Fanless, conformal coated PSU is a benefit for industrial environment.



Low profile, chassis mounting, extended temperature range is essential for external display application.



Small size, conduction cooled, make it suitable to be mounted on the power amplifier heatsink.



IP65 option, ruggedization, conformal coating, -40°C to 90°C baseplate operation, are key functionalities for avionic applications.



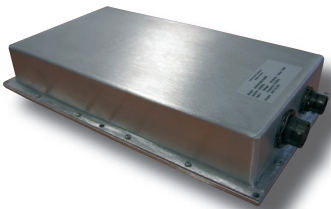
AC-DC Conduction cooled PST21 150, 300, 600, 1200W

Integration & custom design with PST21



2 x PST21A-24600-MTV

Input : 85-264Vac 47-63Hz
Output : 24V / 1200W
300*271*50mm IP65 package
External display application



1 x PST21B-28600-MV

Input : 85-264Vac 47-63Hz
Output : 28V / 600W
155*275*45mm Amphenol connectors IP65 package
Defense application



1 x PST21C-28150-28150

Input : 85-264Vac
Outputs : 115Vac / 4,5A 400Hz - 28Vdc / 4A - 28Vdc / 4A
19''*6U*305mm
Industrial application



1 x PST21C-1575-24150-MTV-01

Input : 90-264Vac 47-440Hz PFC correction
Outputs : 15Vdc / 75W - 24Vdc / 150W
200*105*70mm IP67
Naval display application