



AC-DC Conduction cooled

PST21BX 1500W

PST21BX, AC-DC 1500W converter in a 200*127*40mm conduction cooled format, incorporates input filtering, input and output protections, very robust mechanical package and connection required in most of the severe environment for industrial, defense type of applications. The PSU provides very high power density thanks to the integration of Vicor Corp. DCM modules, high efficiency, input-to-output isolation, *active very low inrush current limitation circuit*, input over/undervoltage lockout. The PSU wide range input is protected against surges and transients and EMI filtered. Fanless, this solution is suitable for high reliability and high operating temperature applications.

The PSU is configurable with 1 to 3 outputs delivering 500W each, in many output voltages from 3,3V to 48Vdc, other outputs are even possible as semi-standard versions.

General features

- Input : 85-265Vac
- Active PFC EN61000-3-2
- E.M.I. : EN55022, MIL-STD461E CE102 (MV option)
- 1 to 3 outputs from 3,3V to 48Vdc 500W each
- Operating temperature -40°C +100°C baseplate
- 200*127*40mm

Signals

- Remote ON/OFF isolated (general and individual)
- Output LED
- Output voltage adjustment by potentiometer
- PowerGood
- Remote senses
- AC Fail
- Auxiliary 5Vdc

Options

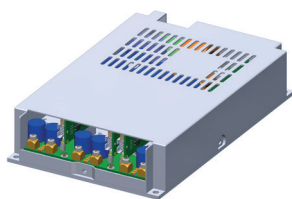
- -H : Addition of a 15mm heatsink longitudinal fins
- -H1 : Addition of a 15mm heatsink transversal fins
- -MV : MIL-STD810, 704, MIL-STD 461 CE102 Components & PCB are covered with an acrylic coating
- -IP : Integration into IP65 enclosure

Benefits

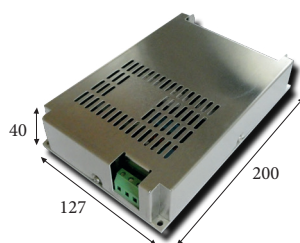
- 1500W in a very small package
- Active very low inrush current limitation
- Very low profile 40mm
- High temperature operation 100°C baseplate
- Many signal available

Full datasheet on www.powersystemtechnology.com

PST21BX
AC-DC, 1500W, 1-3 outputs
200 x 127 x 40mm



PST21BX
AC-DC, 1500W, 1-3 outputs
200 x 127 x 40mm



PST21BX
Configurator

| V1 | | V2 | | V3 | | Option |
|-----|------|-----|------|-----|------|---------------------|
| N | Pout | N | Pout | N | Pout | |
| 3V3 | 150 | 3V3 | 150 | 3V3 | 150 | H H1 MV IP |
| 5 | 250 | 5 | 250 | 5 | 250 | |
| 12 | 500 | 12 | 500 | 12 | 500 | |
| 15 | 500 | 15 | 500 | 15 | 500 | |
| 24 | 500 | 24 | 500 | 24 | 500 | |
| 28 | 500 | 28 | 500 | 28 | 500 | |
| 48 | 500 | 48 | 500 | 48 | 500 | |



Fanless, conformal coated PSU is a benefit for industrial environment.



Low profile, chassis mounting, extended temperature range is essential for external display application.



Small size, conduction cooled, make it suitable to be mounted on the power amplifier heatsink.



IP65 option, ruggedization, conformal coating, -40°C to 90°C baseplate operation, are key functionalities for avionic applications.